

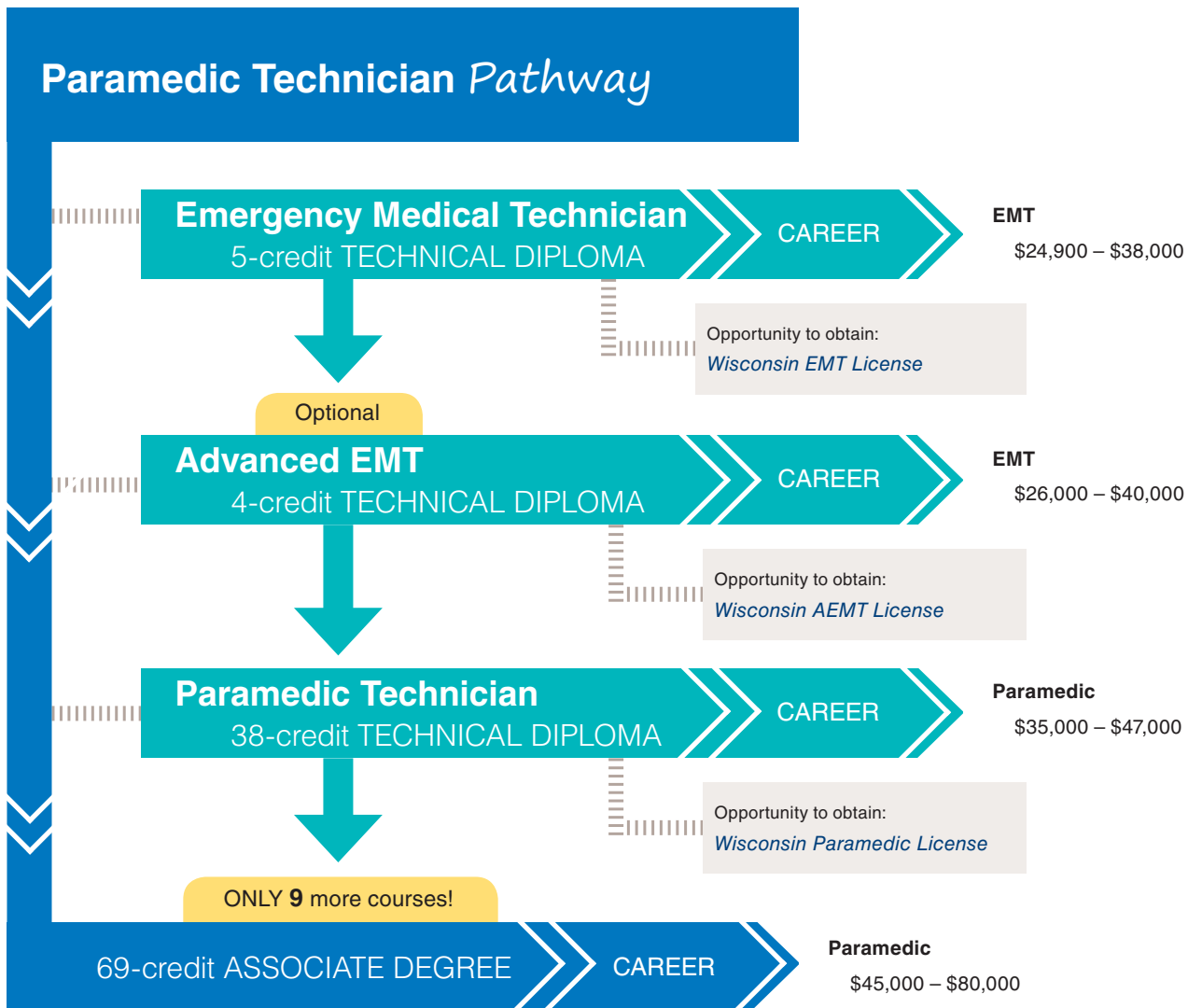
Paramedic Technician

www.wctc.edu/paramedic

Pathway

Discuss your pathway with an advisor. Call **262.691.5400** for an appointment.

Earn certificates, technical diplomas and/or industry credentials along this pathway. Start with some courses for entry-level employment, and continue with additional courses for higher wages and job advancement.



Continue your education with the **Nursing - Associate Degree** program at WCTC, utilizing the Paramedic to RN Bridge.

Continue on your educational pathway to a bachelor's degree!

WCTC has many transfer agreements in place to make the process seamless.

To qualify for most federal and state financial aid, a student must be enrolled in a technical diploma or associate degree program.

Employment/wage data sourced from the following: WCTC's "Graduate Success Report, Economic Modeling Specialists International (EMSI), and Payscale.com, as well as Advisory Committee input.

Waukesha County Technical College does not discriminate on the basis of race, color, national origin, sex, sexual orientation, disability or age in employment, admissions or its programs or activities. The following position has been designated to handle inquiries regarding the College's non-discrimination policies: Compliance Officer, 800 Main Street, Pewaukee, WI 53072 or 262.695.3481.



SCHOOL OF
**Protective and
Human Services**