

# Early Childhood Education

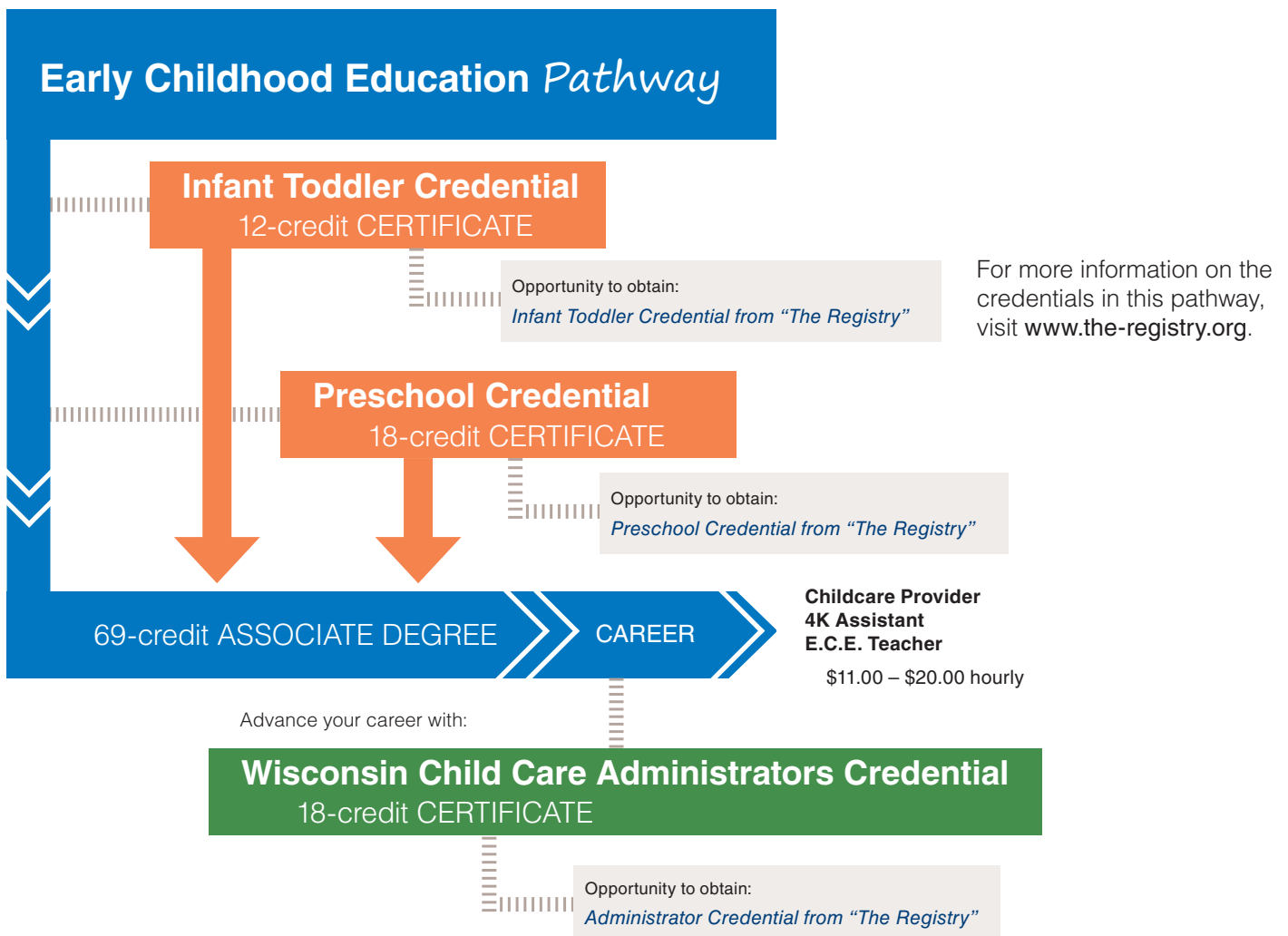
[www.wctc.edu/early-edu](http://www.wctc.edu/early-edu)

Pathway

Discuss your pathway with an advisor. Call **262.691.5400** for an appointment.

Earn certificates, technical diplomas and/or industry credentials along this pathway!

This pathway program is offered in the Blended Options format. Blended Option programs are organized into short, manageable segments (for example, one course every six to eight weeks) to accommodate students' work and family schedules. Additionally, core courses are guaranteed to be available on the same night per week for the duration of a student's program, thus ensuring a consistent schedule.



Continue on your educational pathway to a bachelor's degree!

WCTC has many transfer agreements in place to make the process seamless.

*To qualify for most federal and state financial aid, a student must be enrolled in a technical diploma or associate degree program.*

Employment/wage data sourced from the following: WCTC's "Graduate Success Report, Economic Modeling Specialists International (EMS), and Payscale.com, as well as Advisory Committee input.

Waukesha County Technical College does not discriminate on the basis of race, color, national origin, sex, sexual orientation, disability or age in employment, admissions or its programs or activities. The following position has been designated to handle inquiries regarding the College's non-discrimination policies: Compliance Officer, 800 Main Street, Pewaukee, WI 53072 or 262.695.3481.