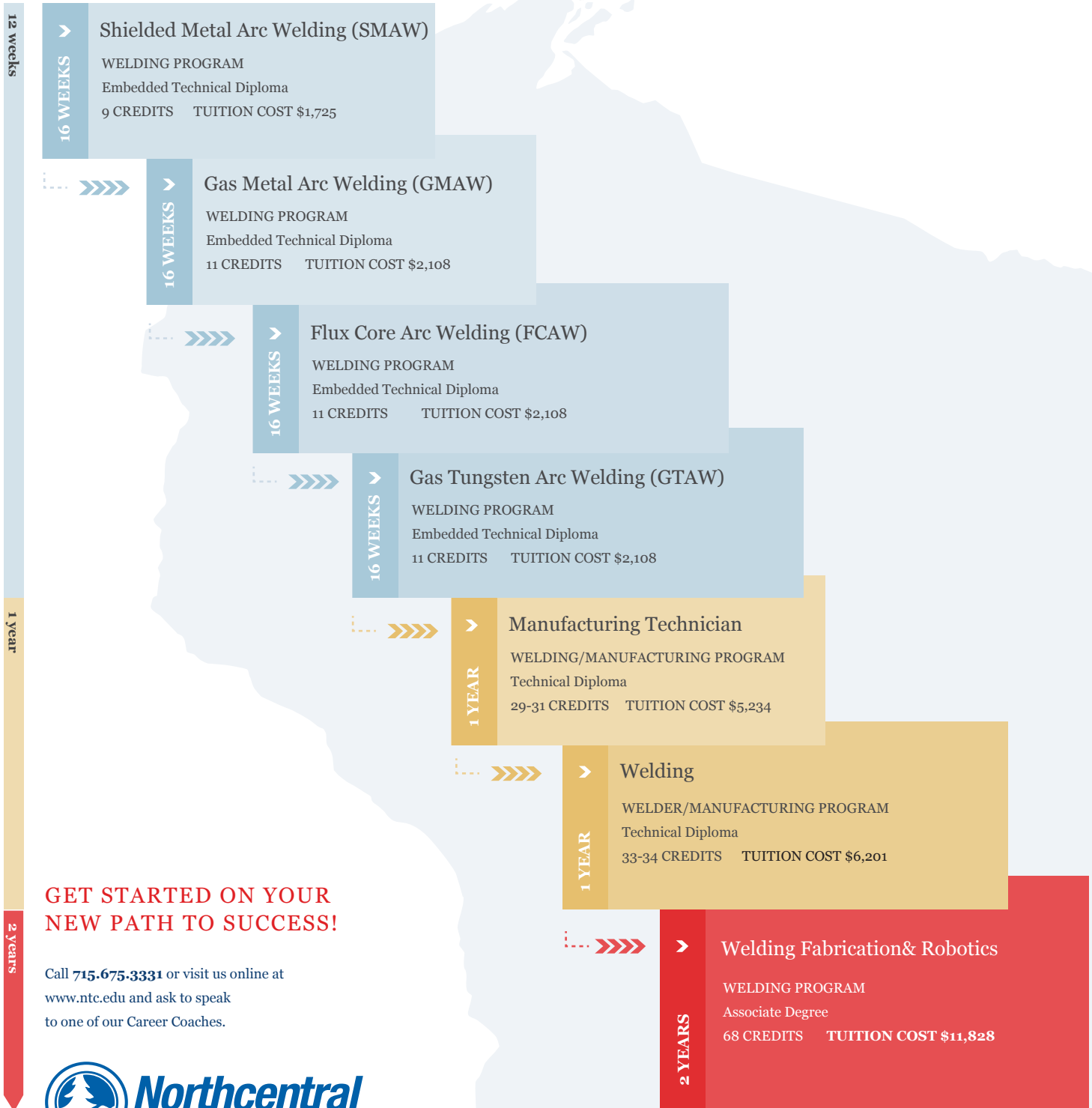


Welding

BUILD ON YOUR TRAINING. BUILD ON YOUR OPPORTUNITIES.

Wisconsin manufacturers are hungry for skilled workers like metal fabricators and welders. That makes now the time to train your way into a new job in advanced manufacturing. This program is streamlined to make everything from enrollment to job placement as easy as possible. You can build on the skills you learn – at your own pace – to start your new career faster than ever before.



GET STARTED ON YOUR NEW PATH TO SUCCESS!

Call 715.675.3331 or visit us online at www.ntc.edu and ask to speak to one of our Career Coaches.



* Information is approximate based on in-state tuition

Admissions

Getting Started

To apply for any of NTC's programs, simply navigate to www.ntc.edu and click the "Apply Now" button to get started.

Financial Aid

Financial aid helps students continue their education by offering grants, loans, work-study programs, and scholarships to students who qualify for assistance. Applying for Financial Aid is FREE and done electronically at www.FAFSA.gov (use NTC School Code 005387).

Tuition and Financial Assistance Through Job Centers

Connect with your local Job Center to see if you are eligible for tuition assistance, financial resources or additional program support.

FAQ's

Who can I talk to if I have questions?

Simply connect with a Career Coach (contact information below). They will walk through the program and answer any questions you may have. If you're interested, they'll help you apply and provide resources to support you along the way.

Who enrolls in this program?

Anyone who wants to gain the skills to get a job fast in Wisconsin's high-demand advanced manufacturing industry.

Will I be successful?

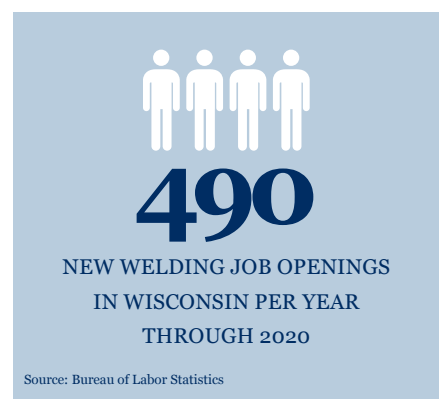
Our streamlined training programs are specifically designed to get participants back to work fast. If you have the desire to be successful, we will support you every step of the way with studying support, career searches, counseling, and community resources. You are not alone.

How will I pay for this?

Financial aid is available – along with experts who can help you plan your payments. You may also be eligible for tuition assistance through a Wisconsin Job Center. Talk with an advisor to learn more.


How will I get a job?

We have a variety of ways to connect you to your next job in advanced manufacturing – from the ongoing support of our Career Services team to on-site job fairs and Tech Connect (a statewide job board exclusively for technical college students and grads). Bottom line, we will be there to help you along the way – and our success rate tells the story. 81% of program graduates are employed in their field. Over half were employed immediately after their training, 20% were hired during training, and 21% were employed before they enrolled in training.*



Northcentral
TECHNICAL COLLEGE

Contact us today to get started on the road to a great career
Phone: 715-675-3331, Ext. 5860
Email: admissions@ntc.edu



The U.S. Department of Labor's Employment and Training Administration has funded 100% of this project equaling \$636,211. This is an equal opportunity program. Assistive technologies are available upon request and include Voice/TTY (711 or 800-947-6644)

* Graduate Survey published July 2013

